

SARA NEWS

**SCHENECTADY AMATEUR
RADIO ASSOCIATION, INC.**

**"SERVICE THROUGH
AMATEUR RADIO"**

FOUNDED 1930

K2AE REPEATERS

<http://www.k2ae.org/>

©2011-2012 SARA saranews@k2ae.org

December, 2011

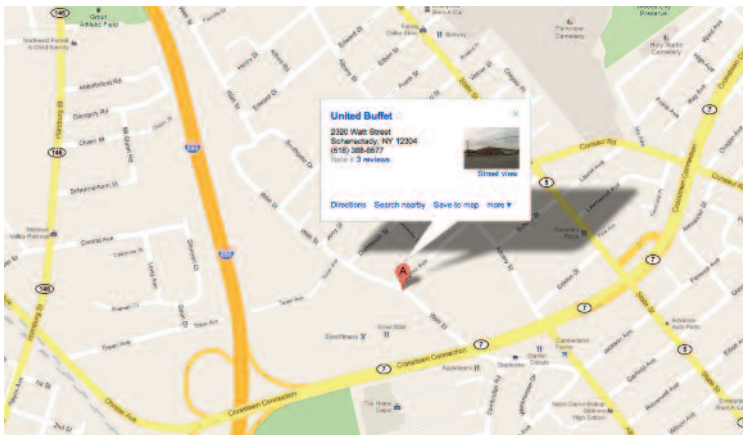
Holiday Party, December 5th, 2011 at 6 PM, United Buffet, Watt Street, Schenectady

Holiday Dinner at United Buffet

The Holiday Meeting will be held at the United Buffet, located at the intersection of Rte. 7 and Watt Street, Schenectady.

As has been the practice for the past few years, dinner is "Dutch treat" and all you can eat. Please pay for your meal, and that of a guest if you would like to bring one, at the register, reportedly \$10.99 for the buffet, 10% discount for seniors, and there are sometimes coupons in the newspaper.

SARA has reserved the meeting room from 6:00 PM until closing (10 p.m.). Please join the group there for a chance to relax with friends and talk radio.



Presidential Ramblings

By H Post AK2E

The holiday season is here already. Thank goodness, the snow and cold have been on the shy side in November and hopefully into December.

December 5th we will be getting together again at the United Buffet, 6PM, 2320 Watt St. in Schenectady. We had the staff running for more chairs and tables last year. All are invited. Dutch treat again this year! It's a great evening catching up on rag-chews and fun.

SARA Board meetings are held on the 2nd Wednesday of each month. By doing it this way the Secretary has sufficient time to send the Board Report to the SARA News Editor.

SARA News could use more stories and or events published. It is difficult to publish a news letter with minimal input, and not very interesting for the members to read. Like work it's better to have too much than too little. If you have an interesting story or technical paper, please submit it for publication. Word format or just plain Text format are acceptable.

Our editor Antje N20MA antje1@yahoo.com and



Copy Editor Dennis N2LBT are doing a great job on putting SARA News together – Your input will help!

Remember that during Winter months to leave a little longer pause in the rotation while on the morning and afternoon commute runs. Use minimal power to establish communications with the repeater. A weak station or one needing help, has a better chance of being heard.

The 146.94 repeater has the traffic net on in the morning and afternoon commutes KB2GOM, Jock Elliott does a fantastic job on the road conditions and accident reports for the past several years.

If you come across an accident, note the location, severity, number of vehicles, and if an ambulance is needed. The emergency responders will want to know that information.

“Northbound on the Northway” without a mileage marker or reference to the nearest exit number will not be helpful.

10 Meters just keeps getting better and better. You don’t need a big antenna or a lot of power. I worked several European stations the other morning using 10 watts on sideband and a ¼ wave vertical.

Radio propagation used to be published in QST. There are several sights on line that you can get the necessary information from to optimize your time on the radio.

<http://prop.hfradio.org>

http://hfradio.org/fot_3.html

<http://www.5b4wn.com/main/map>

Happy Holidays and 73

Hal

New 60 Meter Info

Effective 30 days after publication in the Federal Register.

Important Note: Check ARRL.org for publication date

Yesterday (18 November 2011), the FCC published its approval of changes to the US 60 meter band.

http://transition.fcc.gov/Daily_Releases/Daily_Business/2011/db1118/FCC-11-171A1.pdf

Summary:

- (1) Use of the existing 5366.5 kHz (carrier) is removed, replaced by 5357.0 kHz (carrier).
- (2) Maximum ERP raised from 50 to 100 watts PEP.
- (3) Three emission modes (CW, RTTY, Data) are authorized in addition to the existing USB mode.

Volunteer Examiner Session

SARA conducts VE sessions at 6:00 PM on regular meeting nights, the first non-holiday Monday of each month except July, August, and December. Those interested in taking an exam are encouraged to contact Bill Michler, KG2AC, a few days prior so he can arrange for sufficient VEs to be present. You can find Bill’s contact information on the last page. Non-members who successfully complete the exam will be given SARA membership for the physical year (July – June) Contact Bill at kg2ac@juno.com or 982-0144.

Board Of Directors

Pres: Hal Post AK2E ak2e@arrl.net 306-6817
 VP: James Stewart K2PK k2pk@arrl.net 399-1867
 Sec: Dan Fiorillo KC2MER fiorillo.dan@verizon.net 356-3595
 Treas: Tim Long, W2UI, tlong8@nycap.rr.com 399-7454

Directors

Diana DeAvila W2NU gkygrl@gmail.com 982-0144
 Craig Wood, W2XAD, w2xad@nycap.rr.com, 370-5224
 Frank Simon, WB2PUH, simonf072@strose.edu, 477-5255
 Ken Day, K2DAY k2day@nycap.rr.com, 858-2056

Standing Committees

SARA News: Antje Dirksen-Post N2OMA,
antje1@yahoo.com, 315-483-0524
 Elmer: Tim Long, W2UI, tlong8@nycap.rr.com, 399-7454
 Antenna Party: Tim Long, tlong8@nycap.rr.com, 399-7454
 K2AE Trustee: Hal Post AK2E ak2e@arrl.net 381-6817
 Rptr: Scott Krone N2YCA n2yca@nycap.rr.com 273-1610
 RFI/TVI: Rudy Dehn W2JVF w2jvf@juno.com 372-6139
 Public Service Events: Ken Clikeman AA2CW
AA2CW2010@yahoo.com 861-6825
 VE Team: Bill Mischler KG2AC kg2ac@juno.com 982-0144

FCC Exam Registration (518) 982-0144



Schenectady Amateur Radio Association, Inc.

MEMBERSHIP

APPLICATION/RENEWAL FORM

Regular Dues	\$20.00	\$ _____
Spouse	\$5.00	\$ _____
Student	\$5.00	\$ _____
Repeater Donation		\$ _____
Initiation Fee	\$5.00*	\$ _____

Name _____ Call _____

E-mail _____

Street _____

City _____ State ____ Zip _____

Phone _____

ARRL _____ RACES _____ ARES _____ MARS _____

Send to SARA, PO Box 449, Schenectady, NY 12301
 July, 2010 through June, 2012

SARA/K2AE Repeaters

Status	ON AIR	ON AIR	OFF AIR	ON AIR
Band	6-Meters	2-Meters	1.25-Meters	70-Centimeters
User TX	52.570 MHz	147.660 MHz	222.460 MHz	449.200 MHz
User RX	53.570 MHz	147.060 MHz	224.060 MHz	444.200 MHz

Schenectady County Emergency Net

Band	Repeater	Time	NCS
70cm	444.200Mhz+	1:00 PM	Raleigh K2RI
2m	147.060Mhz+	1:30 PM	Raleigh K2RI
75m	3953KHz	2:00 PM	TBA

Schenectady County Emergency Net

SARA members act as Net Control Stations for the Schenectady County Emergency Net (SCEN) on Sunday afternoons. The nets are open to all amateurs; ARES RACES membership is not required to participate. The purpose of the nets is to train, pass any traffic that you might have and any announcements of general interest.